



“NO HATE”

Youth Exchange

“NO HATE”

Information Pack

Luxembourg, Luxembourg
8. December. 2017 (Arrival) -
17. December 2017 (Departure)

1

PROJECT DESCRIPTION

The internet has changed the types and possibilities of human interaction. The internet has given us the possibility, in theory, to communicate with almost any other person in the world; it has even made it possible, in theory, for one thought in a back room in a small and unknown corner of the world to be picked up by every other person! Everyone with access to the internet is now both publisher and public speaker. Few, it seems, can interfere with what we want to say. This is a novelty that few would want reversed, but it should not surprise us that the ever-expanding world of online interaction has also come to reflect and feed back into many of the difficulties that human beings have historically encountered in their 'real' existence. Intolerance and 'hate' have been a feature of human society almost since time began. A number of studies have identified an increase in these attitudes over recent years. The problem is that if there is less tolerance of differences, and if the constraints on that intolerance are not watched, then intolerance – and hate – will find expression, both in the things that people do and in the things, they say. The internet has opened up new ways of saying things, and it has opened up new avenues to say them to more people. The constraints, however, on what we can say online are far fewer than those which exist off-line: we can say things over the Internet that we would not dare to say in public in the 'real' world. If hate speech offline is a problem that societies have recognized, and found the need to address, is online hate speech something that we can ignore? Of course not.

Young people are already suffering from online hate speech:

- Across Europe, 6% of 9 to 16-year-old Internet users reported having been bullied online, and 3% confessed to having bullied others.
- 16% of young Internet users in Europe say they have posted comments on the Internet that were hateful towards a person or group of people.
- 78% of the respondents of an online survey stated they had encountered hate speech online on a regular basis. The three most recurrent targets of hate speech were: LGBT people (70%), Muslims including refugees and migrants of Muslim origin (60%) and women.

The problem is huge, and it becomes bigger and bigger especially in nowadays when we all face economic breakdown and unemployment as result, huge refugee wave, raise of extremism and terrorism etc. All those challenges contributes to spreading hate speech online, as young people are in the situation of ambiguity and frustration.

In 2012, Advisory Council on Youth of Council of Europe started the No Hate Speech Movement, the campaign that aimed to combat the hate speech online in all its forms, and with this “No hate” project we want to contribute to making internet a safer place for young people and to prevent human rights violation online.

The issues that will be addressed by competences developed during the project are:

- Decrease the level of aggression and intolerance online through civil society organisations/youth workers.
- Perception of phenomena of hate speech and its influence on young people's lives.
- Subjective opinion, memory and bias.
- Human rights online
- Peace-building
- Internet literacy
- Freedom of speech
- Promoting intercultural dialogue
- Preventing radicalization of young people

A project “No hate” is a long-term project aiming at combating with the hate speech online and to promote no hate speech movement among young people.

1The project contains two elements:

- 1. Youth Exchange in Luxembourg from 8th till 17th of December 2017;**
- 2. Training course “No Hate” in Yerevan, Armenia from 10th to 18th of February 2018**

The first activity of the project is the Youth Exchange on internet literacy, that will involve not just young people but also bloggers and online activists. After this exchange, we expect our group to start the online campaign **“Be the change: make internet safe for everybody”**. It will take place in Luxembourg from 8-17 of December 2017.

THIS INFOPACK IS FOR YOUTH EXCHANGE IN LUXEMBOURG

COUNTRIES INVOLVED: Luxembourg, Armenia, Russia, Turkey

OBJECTIVES OF THE YOUTH EXCHANGE ARE:

- To introduce participants to No Hate Speech Movement, its aims and objectives
- To explore Human Rights and Human Rights Education in addressing hate speech online.
- To get aware about internet literacy and mechanisms of protection online.
- To explore Instruments on Hate Speech and Internet Governance.
- To discuss the role of Blogger in countering hate speech online.
- To start the online campaign for promoting of safe internet

PROFILE OF PARTICIPANTS:

The participants will be 28 young people interested in education and/or training, volunteers working with young people that meet the following criteria:

- aged from 15 to 20 years;
- English Language and communication skills;
- The need to improve skills and competences relating to the topic of the project;
- Willingness to cooperate and develop future projects in Erasmus+;
- The role/ involvement with Youth Work and the sending organization.

In general, as the project aims to support the development of skills and competences to improve youth work, the project intends to involve all actors that are working in the educational sector and other sectors involving young people.

WORKING LANGUAGE: English

VENUE: Luxembourg city, Luxembourg

Luxembourg City is the capital of the Grand Duchy of Luxembourg; it is located in the heart of Europe, bordered by Germany, France and Belgium where you can drive 3 hours from Luxembourg City to be in Frankfurt, Brussels, and Paris.

The capital, Luxembourg City, is, together with Brussels and Strasbourg, one of the three official capitals of the European Union and the seat of the European Court of Justice, the highest juridical authority in the EU, many European institutions are based in Luxembourg like the European Investment Bank, Secretariat of the European Parliament and many more, as Luxembourg was a founding member of many European Institutions; and to know that the word (Schengen) that is used for the visas is one of the cities in Luxembourg where the treaty was signed.

Its culture, people and languages are highly intertwined with its neighbors, making it essentially a mixture of French and Germanic cultures. The repeated invasions by its neighbor countries, especially in World War II, resulted in the country's strong will for mediation between France and Germany and led to the foundation of the European Union.

Luxembourg has 3 official languages: Luxembourgish, French and German. English and Portuguese are widely spoken in Luxembourg due to the variety of the European Institutions and international private firms which is located in Luxembourg in addition to the demographic structure of the population.

The population of Luxembourg state is over 500 thousand inhabitants where around 100 thousands live in Luxembourg City, in addition to estimated 150 thousands who come on week days to work in Luxembourg while living in the neighboring countries.

Luxembourg is well connected and there are widely open WiFi networks available in the city.

Currency is Euro, public transportation cost: 2 Euros for 2 hours, 4 Euros daily ticket for all over Luxembourg.

ACCOMMODATION

Chalet "d'Géisserei" in Luxembourg-City

5 rue Munchen-Tesch, L-2173 Luxembourg, Tel.: +352 269484

The chalet is located on the grounds of a former foundry in Luxembourg-Eich. It is managed by the Foundation Guides and Scouts of Luxembourg. The building was completely renovated in 2007 and houses the chalet “d’Géisserei” as well as the headquarters of the Guides and Scouts of Luxembourg (LGS).

1The chalet is located near the “place Dargent” from where it is a short way to the centre of Luxembourg-City. (30 min. walk to the city center)

A modern interior offers all necessary amenities, and is suited for disabled people (wheelchair access, elevator, adapted toilets and showers). The Chalet has WiFi coverage, and participants will have special password to enter the building.

All beds have fitted sheets, pillowcases and mattress covers; blankets are not available. (Sleeping bags will be provided by organizers).



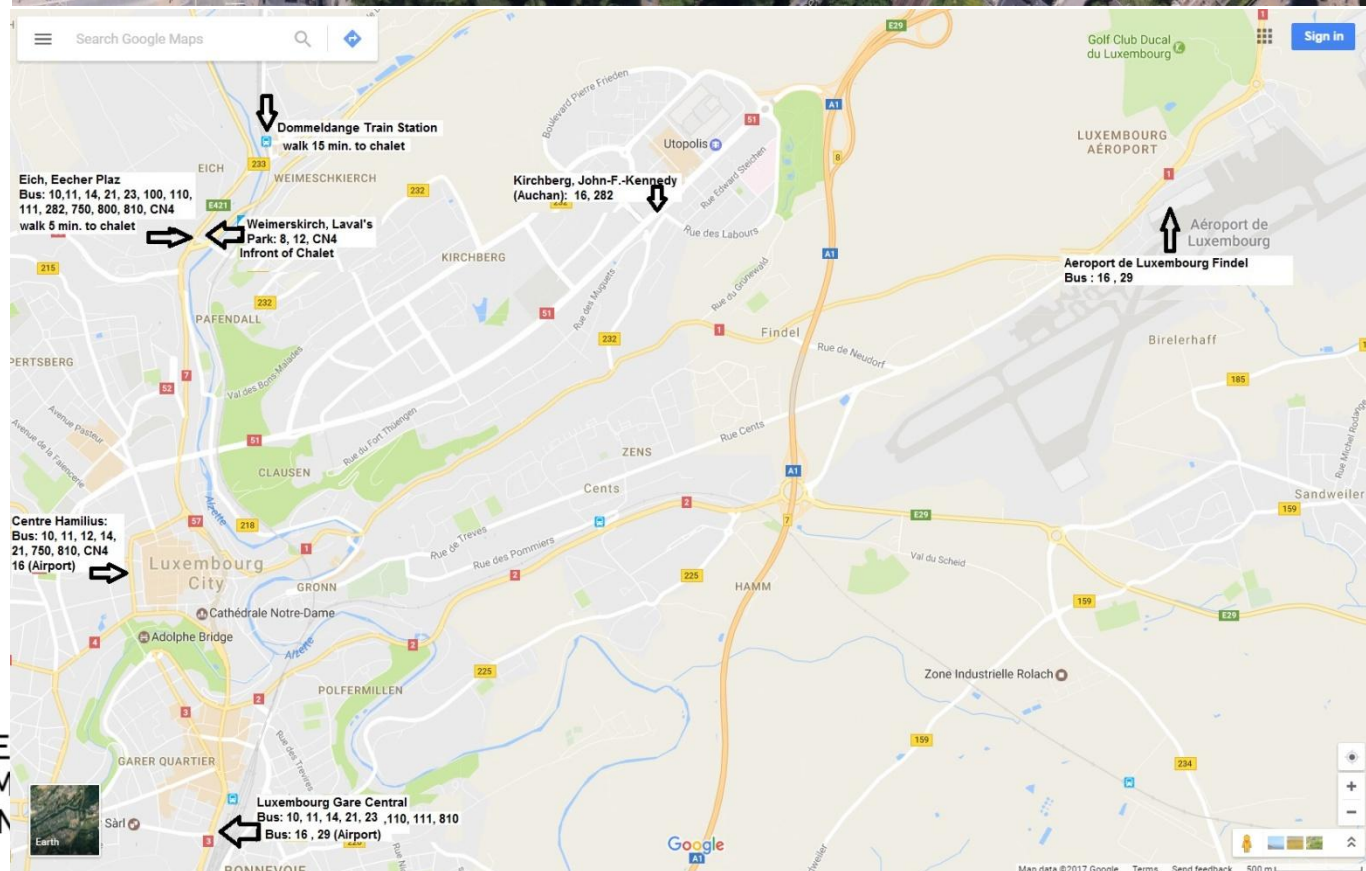
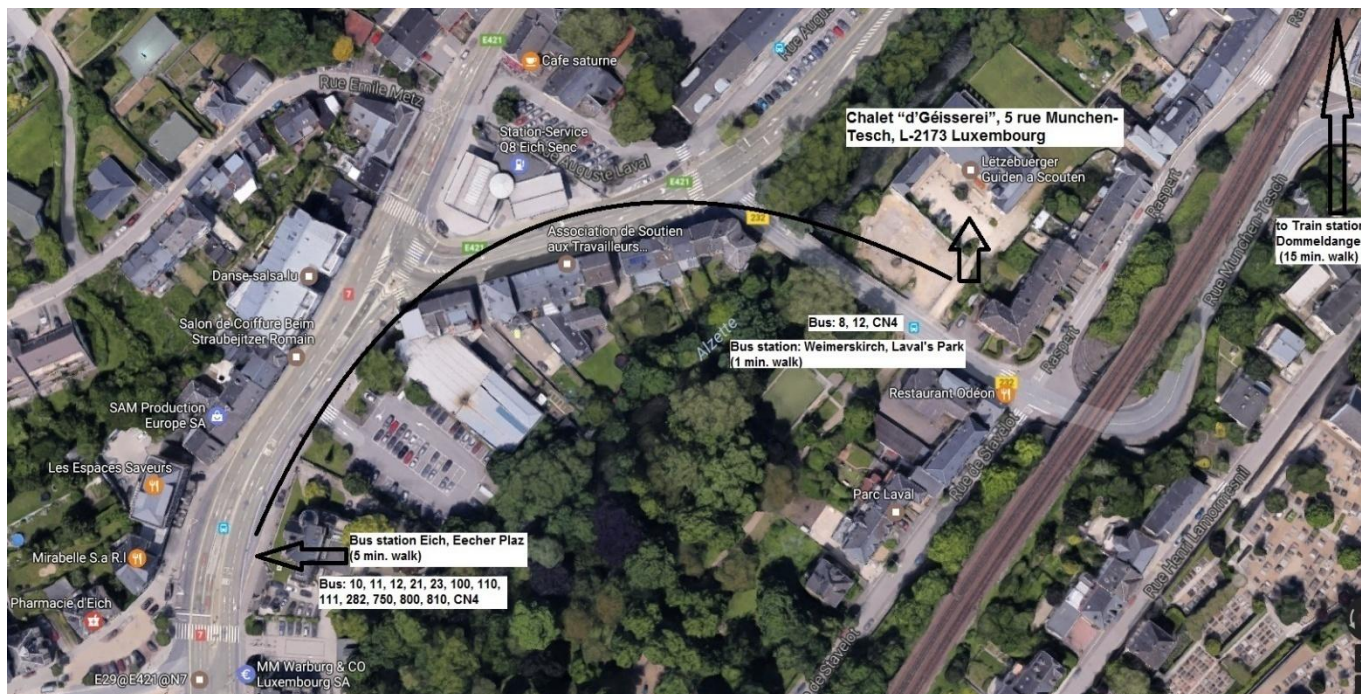
Basic food can be purchased in nearby stores (rue A. Laval / place Dargent / rue de Muhlenbach).

ACCESS / PUBLIC TRANSPORT

Bus stop: *Parc Laval* (in front of the chalet) or Eich, Eecher Plaz (5 min. walk)

Railway station Dommeldange (15 minute walk)

Timetable of the public transport in Luxembourg: <http://www.mobiliteit.lu/>



FOOD AND SPECIAL NEEDS



The participants will be provided with three meals – breakfast, lunch, dinner as well as with coffee breaks. For any special needs (other than those that were mentioned in your application forms) please contact the host organization by e-mail: amitiesluxarm@gmail.com

PARTICIPATION FEE: 50 EUR (will be deducted from your actual travel cost).

TRAVEL COSTS AND REIMBURSEMENTS

The reimbursement of the travel expenses (travel from your departure city to the venue of the project) will be made by bank transfer for all participants.

TRAVEL BUDGET

Country - Number of Participants - Max. reimbursement per participant

Armenia - 7 participants (5+2 group leaders), (maximum travel cost 530 eur)

Russian Federation - 7 participants (5+2 group leaders), (maximum travel cost 360 eur)

Turkey - 7 participants (5+2 group leaders), (maximum travel cost 360 eur)

Luxembourg - 7 participants (5+2 group leaders)

For the Non-EU countries the visa cost for Luxembourg will be reimbursed based on official proofs and invoices.

Mandatory documents to give to get reimbursed:

1. Booking email from air company (only when booked online);
2. E-ticket or/and receipt/invoice from flights;
3. A copy of your printed electronic ticket and all other original tickets (bus/train) used during your travel to Armenia;
4. Boarding passes (of arrival and return flight). Be very careful not to lose the boarding pass.

We need the boarding pass as an evidence for your flight. If you lose it, you CANNOT be reimbursed of your flight ticket! We will kindly ask you to send requested documents to us as soon as possible as without them we will not be able to provide you travel reimbursement, especially for what concerns flight reimbursement.

All tickets, receipt, invoices and boarding passes please send us to this address:

**11Helen Buchholts, Esch-sur-Alzette, Luxembourg
For Tatevik Margaryan**

IMPORTANT: before you send the originals by post send by email all documents scanned to: amitiesluxarm@gmail.com and wiyuarm@gmail.com

Please note, if you bought your ticket in your local currency which might be different than EURO, we will calculate your travel costs through the official web page of Erasmus + program according to the exchange rates of the month when the tickets were bought.

NOTE: The tickets which are within the limit indicated in the budget will be reimbursed fully (reminder: participation fee will be deducted from the travel cost). Any amount that is more than the mentioned budget limit per country should be covered by the participants themselves.

OTHER COSTS

Food, accommodation and programme costs will be provided and fully paid thanks to financial support from Erasmus+ Programme granted by Luxembourgish National Agency - Anefore. Insurance costs are not eligible costs, meaning that you have to support your own personal injuries insurance.

WHAT TO BRING WITH YOU

Besides having information about the cases based on hate speech in your country, keep in mind to have:

1. Medicines: For preventive reasons we recommend for those who have health problems to bring their own medicines;
2. Any dictionaries you might need for a smoother communication in English;
3. An alarm clock, charger and loading cables of your e-devices;
4. If you have and consider important to carry with you - a mobile, camera, tablet, laptop ect.
5. Personal cosmetics such as shampoos, gel, toothpaste, swimming suit, etc. (but you don't need to bring towels);
6. Warm clothes, and waterproof for rain;
7. Walking shoes!
8. Your artistic skills! Any hidden talent that you will share with us, which you definitely will need during creativity workshops.
9. Passport - Please, check the validity of the passports before the departure – it needs to be valid at least for six months after your visit to Luxembourg. For non EU citizens you must send us the passport details in order to prepare invitation letters. For the EU citizens travelling from inside the EU a valid ID will be sufficient for travelling.



INTERCULTURAL EVENING

One of the evenings will be dedicated to the Intercultural Evening. You will present your own cultures – national, regional, personal or any kind of culture you feel you belong. This presentations/activity should not be just a “lecture” so try to find most creative way to show your culture. It means that all options are possible. A culture may be presented by a song, a story, a poem, a dance, some local special drinks or food (you will not have opportunity to cook), etc.

You can bring pictures, music or anything which you consider to be most appropriate to present your culture. Bring CDs of traditional / typical and party music or other things typical from your country that you want to share with us during the Evening of Cultures and during other evenings.

Dear participants, we have to mention that homemade alcohol is forbidden for the evenings of cultures and generally for the project. With the homemade alcohol it is not possible to monitor the quality and we would not like to risk your health.

PARTICIPATION IN THE YOUTH EXCHANGE



You are expected to participate fully in all activities, unless you are ill. Unauthorized absence from activities and workshops is not permitted. If less than 80% of the programme is attended, it will not be possible to be reimbursed for the international travel costs.

In case you need more info please contact: amitiesluxarm@gmail.com

+352 691 548 071, Tatev